

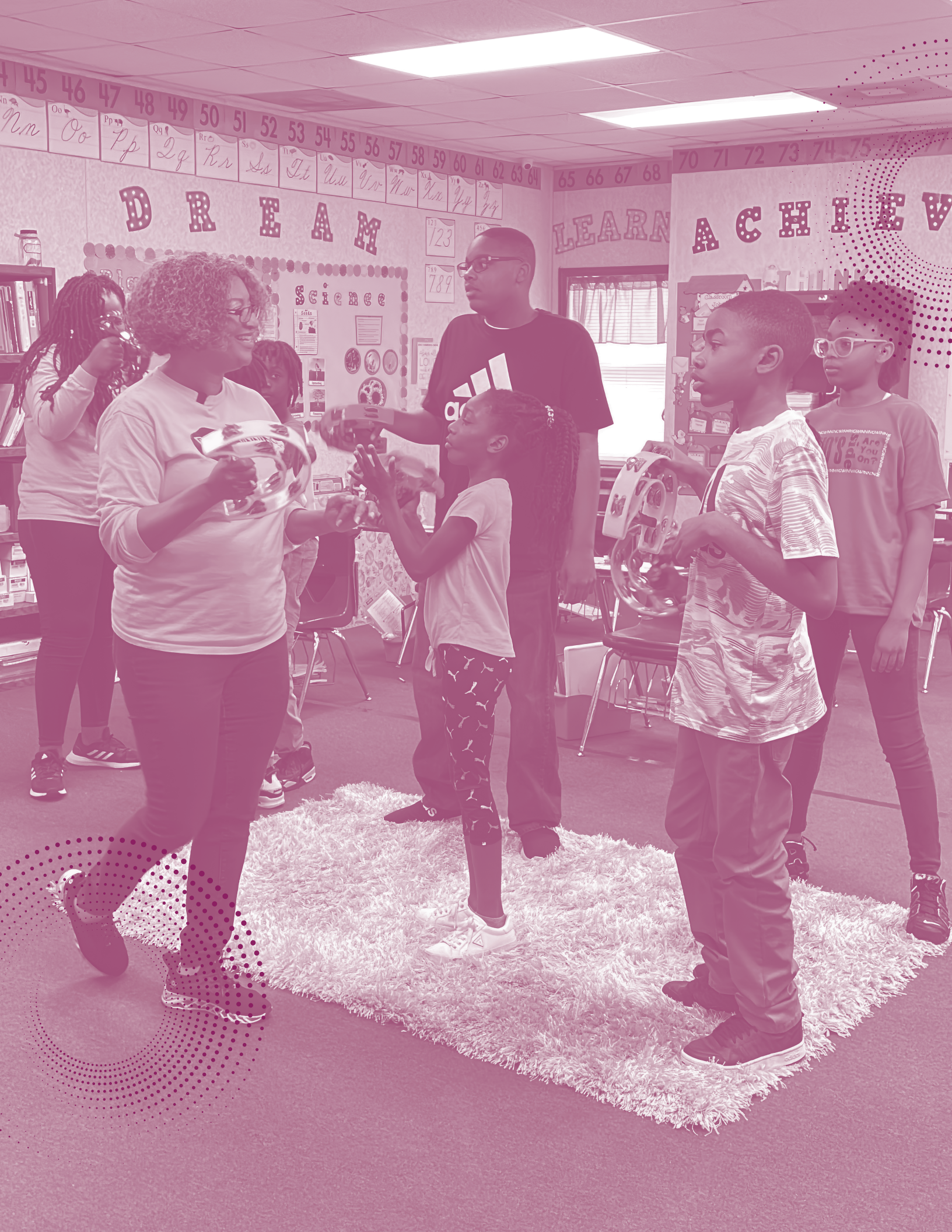


AUTISM
FAITH NETWORK



ACCESSIBLE FAITH INITIATIVE TOOLKIT

APRIL 2026



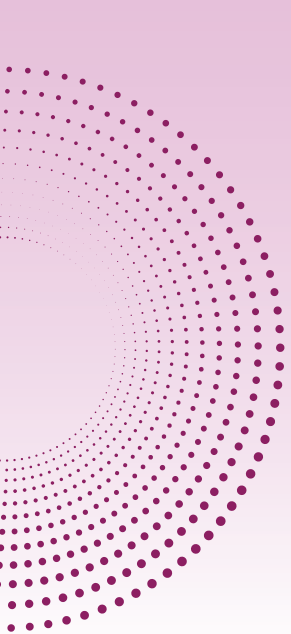


TABLE OF CONTENTS

<u>Our Vision</u>	<u>6</u>
<u>Activity Ideas For Your Church</u>	<u>8</u>
<u>Testimonials</u>	<u>11</u>
<u>Frequently Asked Questions</u>	<u>12</u>
<u>Sample Announcements</u>	<u>14</u>
<u>Sample Social Media Posts & Ideas</u>	<u>16</u>
<u>10 Steps To Your Church Becoming More Inclusive For People With Disabilities</u>	<u>18</u>
<u>The Do's And Don'ts Of Making Your Place of Worship Inclusive For Autistic Children</u>	<u>19</u>
<u>How Parents Can Nurture The Faith Of Their Autistic Child</u>	<u>20</u>
<u>How Church Leadership Can Support Autistic Children and Their Families</u>	<u>21</u>
<u>Disability Ministry Groups</u>	<u>22</u>

“Every autistic person should have a local place of worship where they are welcomed with open arms and have a sense of belonging. We’re here to help make this happen.”



*Tonya Nash, Founder of the
Autism Faith Network*

Dear Friends,

Thank you for your interest in the Accessible Faith Initiative. Our hope is to help places of worship become more welcoming and supportive for autistic individuals and their families. We are grateful that you are considering being part of this important work.

The Autism Faith Network was born out of my family's personal journey. My husband, Jamie, and I are the proud parents of two amazing autistic sons. During Jamie's military service, our family moved frequently and often struggled to find a church home that could accommodate the unique needs of our boys.

Everything changed in 2013 when a church we were attending started a disability ministry. It opened our eyes to what it felt like to be fully welcomed and supported in a place of worship. That experience inspired me to help other churches understand the importance of creating inclusive environments for people with disabilities and their families.

In 2016, we launched the Accessible Faith Initiative to equip churches with the tools and resources needed to promote autism awareness, acceptance, and inclusion. Since then, the initiative has continued to grow. Each year we provide support to churches through webinars, infographics, prayer groups, educational materials, activity guides, sensory toolkits, and more.

This toolkit is designed to help your church take meaningful steps toward greater inclusion. Inside you will find:

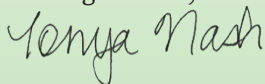
- Our Vision
- Activity Ideas for Churches
- Testimonials
- Frequently Asked Questions
- Sample Announcements and Social Media Posts
- Helpful Infographics

Whether your church is just beginning this journey or already has a disability ministry in place, we hope these resources will encourage and guide your efforts.

Thank you for partnering with us to help create places of worship where every person feels welcomed, valued, and included.

To learn more about the Autism Faith Network and our programs, please visit autismfaithnetwork.com.

With gratitude,



Tonya Nash, MPH, CHES®
Founder and Board President
Autism Faith Network

OUR VISION

For many autistic individuals and their families, attending church can be challenging. Bright lights, loud sounds, crowded spaces, and unspoken social expectations can quickly become overwhelming without proper support.

As Christians, we value gathering together in worship and fellowship. But what about believers with disabilities and the caregivers who support them? Every person deserves a place where they can worship, grow spiritually, and belong within the body of Christ.

There are many ways churches can create a more autism-friendly environment. Our prayer is that every person with a disability will have a welcoming and inclusive place of worship in their local community. By taking intentional steps toward accessibility and inclusion, our churches can better reflect Christ's love and help fulfill the Great Commission.

A Call to Compassion

If you see a child struggling during a church service, respond with grace and compassion. What may appear to be disruptive behavior could actually be the result of sensory overload.

Remember that families affected by disability may have overcome many obstacles just to attend church that day. They are coming for spiritual nourishment, encouragement, and community. As the body of Christ, we have the opportunity to help provide that support.

Rethinking Disability in the Church

In many church settings, the focus around disability centers on prayer for healing. While prayer for healing is important, scripture also reminds us of something equally powerful: every person is created with purpose and value.

Consider these passages:

- **Psalm 139:14 (NIV)** – “I praise you because I am fearfully and wonderfully made.”
- **Jeremiah 29:11 (NIV)** – “For I know the plans I have for you,” declares the Lord.

People with disabilities are fearfully and wonderfully made, and God has a purpose for their lives.

What if it became normal to see individuals with disabilities actively participating and thriving in our churches? Considering that 28% of Americans live with a disability, representation matters. Accessibility and inclusion help make that representation possible.

When churches embrace inclusion, they can also help reduce stigma and support the mental and spiritual well-being of individuals with disabilities and their families.

OUR VISION (continued)

Disability in the Bible

Scripture includes many individuals who lived with disabilities and still played meaningful roles in the Bible.

Consider the following examples:

- **Moses (Exodus 4:10)** – Moses described himself as “slow of speech and tongue,” yet God chose him to lead the Israelites out of Egypt.
- **Isaac (Genesis 27:1)** – Isaac experienced vision loss in his later years.
- **Jacob (Genesis 32:24–32)** – After wrestling with God, Jacob lived with a permanent limp.
- **Mephibosheth (2 Samuel 4:4)** – Jonathan’s son lived with a disability affecting both feet, yet was welcomed and honored by King David.
- **The man born blind (John 9:1–3)** – Jesus taught that his blindness was not the result of sin but an opportunity for God’s works to be revealed.

Their disabilities did not prevent them from participating in God’s plan.

We’re Here to Help

Starting or strengthening a disability ministry may feel overwhelming at first, but you don’t have to do it alone.

The Autism Faith Network is here to provide resources, guidance, and encouragement as your church works toward greater accessibility and inclusion.



ACTIVITY IDEAS FOR YOUR CHURCH

Promoting autism awareness, acceptance, and inclusion

Going to church can be challenging for autistic individuals and their families. Bright lights, loud sounds, crowds, and social expectations can feel overwhelming without proper support. The good news is that churches can take many simple and meaningful steps to create a welcoming, autism-friendly environment.

During Service / Announcements

- Share autism facts in announcements or the sermon.
- Include information in bulletins or newsletters.
- Show a short autism awareness video to the congregation.
- Invite discussion or reflection about inclusion.

Even one announcement about inclusion can help families feel seen and supported.

Special Awareness Days

- Wear autism awareness t-shirts as a congregation.
- Set up a display table with resources about autism and local support.
- Invite an autistic person or family to share their story.
- Take a special offering to assist autistic individuals in need.
- Teach children about autism awareness in children's church.
- Preach a sermon focused on God's love for persons with disabilities.
- Designate an annual Sunday for autism awareness.
- Offer opportunities for persons with disabilities to lead parts of worship (prayer, Bible reading, music, etc.).
- Host a fundraiser for a sensory room or other accessibility resources.
- Organize an autism awareness event on social media for your community.



Activities for Children

- Teach children ways to build friendships with peers who have disabilities.
- Offer modified activity options (music, art, or movement activities).
- Provide multiple participation options (written lyrics, headphones, instruments).
- Share Bible stories about people with disabilities (e.g., Moses) and discuss accomplishments and support.

Staff & Leadership Development

- Assign a staff person to connect regularly with families impacted by disabilities.
- Train leadership, staff, and volunteers on autism and inclusion strategies.
- Provide funding for staff to attend disability ministry conferences (virtual or in-person).
- Hire staff with disabilities to ensure diverse perspectives are included in church decisions.

Community Partnerships

- Reach out to autistic persons and families to ask how the church can support unmet needs.
 - Donate to autism service organizations.
 - Do a service project with an autism support organization.
 - Host respite care events for parents and caregivers.
 - Partner with other churches to host community events for autistic individuals and families.
-

ACTIVITY IDEAS FOR YOUR CHURCH (continued)



Community Care and Connection

- Drop off care packages to families at their home.
- Provide meals or groceries for families in need.
- Send supplies and host virtual art or music classes.
- Start a Zoom Bible story time for children with disabilities.
- Support children by attending school meetings and events.
- Host virtual small groups for families seeking connection.
- Host a drive-in, sensory-friendly movie night at your church.

Weekly Inclusion Practices

- Provide noise-canceling headphones for those sensitive to certain sounds.
- Offer sensory toolkits for children or adults during service.
- Have a room available for people to watch the service on TV.
- Open a sensory room for individuals who may get overwhelmed.
- Offer opportunities for people to receive prayer upon request.
- Use a buddy system for children with disabilities.
- Start or expand a disability ministry at your church.



Activity Tip

Start small. Even one new activity each month can make a big difference. Over time, these small steps can create a church culture where every person feels welcomed, supported, and included.

TESTIMONIALS

Many of our participants have shared how the Accessible Faith Initiative has been helpful to their place of worship. Here are a few testimonials.

We gave out ribbons and handouts and did a PowerPoint presentation. Afterwards, I got a call from my son's church schoolteacher for more information and ways she can better assist him. She's already doing an excellent job but today made her want to step her game up even more. To God be the Glory!

– Tawanda from SC

The initiative was well organized and easy to follow.

– Dorothy from GA

I LOVE IT!!! You just never have an interest or concern until it hits your house. Now, we are all in! There is so much to learn and do.

– Debra from TX

Many members had no idea what autism is. This activity provided tools, info and resources about autism.

– Stephanie from NC

I think this initiative is an amazing way to get the Church involved in something that can be overlooked or mistaken when people don't understand it correctly. Giving these children an opportunity to learn about God while being in a safe environment conducive to them would make such a great impact in our community!

– Jazzmin from GA

I believe people learned and began to ask important questions because of this activity. It has sparked an interest in people in our

congregation that work with special needs children to help us in the development of a special needs ministry.

– Jennifer from GA

I just had a conversation with my mom about her friend's grandson who recently stopped talking. I told my mom that's one of the signs of autism. Mom said, "Oh yes and boys are more likely to be diagnosed. I read that in my church bulletin from Sunday." I was so excited to hear her say that. It is definitely creating more awareness and making an impact. Keep doing what you are doing!

– Shemika from SC

Our community was deeply touched that a church was willing to speak out about acceptance and awareness of autism.

– Chelsea from FL

We are thankful that we can be part of this initiative. Every year, I feel we get more involved and the congregation loves it and looks forward to it. I'm looking forward to next year already!

– Anisha from MS

Volunteers built a sensory wall for an autistic child. We are in forward motion to expand our beginning special needs ministry. The congregation sees the need!

– Vicki from NC

FREQUENTLY ASKED QUESTIONS

Why should my church participate in this initiative?

Autism is one of the most common developmental disorders in the United States. Current estimates show that 1 in 31 children are diagnosed with autism. This means many churches will encounter families affected by autism.

Studies have also found that more than half of families with a child with disabilities do not regularly attend religious services, often because adequate support is not available.

Participating in the Accessible Faith Initiative helps churches become more aware of the needs of autistic individuals and their families while taking meaningful steps to create a more welcoming and inclusive place of worship.

How do we get started?

Start with one simple step, such as sharing autism information with your congregation or providing sensory supports during service. Over time, you can expand your efforts as your church learns and grows.

What if we make mistakes?

Creating an inclusive church is a learning process. The most important thing is showing a willingness to listen, learn, and support families affected by disability.

Is this program only for Christian churches?

No. While the Autism Faith Network is a Christian-based organization, places of worship from any faith tradition are welcome to participate in the Accessible Faith Initiative.

How much does it cost to participate?

Participation costs will depend on the activities your church chooses to implement. Many of the ideas in this toolkit are free or low-cost, making it possible for churches of any size or budget to get involved.

My church is small. Can we still participate?

Absolutely. Churches of any size can participate. Whether your congregation is large or small, there are many ways to promote autism awareness, acceptance, and inclusion within your community.

What are your thoughts about sensory spaces at church?

Sensory spaces can be a helpful support for autistic individuals who need a quiet place to regulate when overwhelmed.

However, our goal is not for autistic individuals to spend the majority of a service separated from

FREQUENTLY ASKED QUESTIONS (continued)

the congregation. Our desire is for people with autism to be fully included in worship and church life, with supportive accommodations available when needed. Sensory spaces should enhance inclusion—not replace it.

Do you recommend any books about disability ministry?

The following books are excellent resources for learning more about disability ministry and creating inclusive faith communities:

- ***Accessible Church: A Gospel-Centered Vision for Including People with Disabilities and their Families*** by Sandra Peoples
- ***Disability and the Church: A Vision for Diversity and Inclusion*** by Dr. Lamar Hardwick
- ***Including People with Disabilities in Faith Communities*** by Erik W. Carter
- ***Leading a Special Needs Ministry*** by Amy Fenton Lee.
- ***Refresh: Spiritual Nourishment for Parents of Children with Special Needs*** by Kimberly Drew and Jocelyn Green.
- ***Unexpected Blessings: The Joys and Possibilities of Life in a Special Needs Family*** by Sandra Peoples.
- ***We Dare Be Brave: African American Moms and the Journey of Raising Children with Disabilities*** by Salina Miller, Patricia Parker, and Charisse Montgomery.

Do you recommend any disability ministry conferences?

Here are a few conferences that focus on disability ministry and inclusion:

- **Together Conference** – Hosted by Together We Care, this in-person conference takes place annually in the Metro Atlanta area. <https://www.togetherconference.net/>
- **Disability and the Church** – Hosted annually by Key Ministry, this event provides training and resources for churches seeking to become more inclusive. <https://disabilityandthechurch.com/>

You may also find disability ministry conferences or workshops in your local area.

Can we contact the Autism Faith Network if we have questions?

Absolutely! We want you to be successful, and we are happy to help. We offer templates, resources, and guidance to support your efforts.

Email: info@autismfaithnetwork.com



SAMPLE ANNOUNCEMENTS

General Announcement

April is Autism Acceptance Month, and here at (CHURCH NAME) we want every person and every family to feel welcome and supported.

For many autistic individuals and their families, attending church can be challenging. Bright lights, loud sounds, crowded spaces, and social expectations can sometimes feel overwhelming without the right support.

That's why our church is partnering with the Autism Faith Network, an organization that equips places of worship to better serve autistic individuals and their families.

Autism is a developmental condition that affects communication, social interaction, and behavior. Today, 1 in 31 children are diagnosed with autism, which means many families in our communities are navigating this journey every day.

Some autistic individuals may avoid eye contact, repeat certain movements, have strong interests, or be sensitive to sounds, lights, or changes in routine. These differences are simply part of how some people experience the world.

As a church, we want to respond with understanding, compassion, and inclusion.

Today we are (DESCRIBE YOUR ACTIVITY OR EVENT) as part of Autism Acceptance Month. Thank you for supporting this effort and helping us create a church where everyone belongs.

To learn more about the Autism Faith Network, visit autismfaithnetwork.com.

Sample Announcement (Short Version - 30 seconds)

April is Autism Acceptance Month, and our church is proud to partner with the Autism Faith Network to promote autism awareness, acceptance, and inclusion.

Autistic individuals and their families can sometimes face challenges when attending church, and we want to be intentional about creating a welcoming and supportive environment for everyone.

Today we are (MENTION YOUR ACTIVITY) as part of this effort.

To learn more about how churches can become more autism-friendly, visit autismfaithnetwork.com.

Sample Announcement (Guest Speaker Introduction)

April is Autism Acceptance Month, and here at (CHURCH NAME) we are committed to creating a welcoming and inclusive environment for all families.

Our church is partnering with the Autism Faith Network, which equips places of worship to better serve autistic individuals and their families.

Today we are honored to welcome (SPEAKER NAME), who will share (HIS/HER/THEIR) experience and insights related to autism.

(OPTIONAL: BRIEF BACKGROUND ABOUT THE SPEAKER)

Please join me in giving (SPEAKER NAME) a warm welcome.

SAMPLE ANNOUNCEMENTS (continued)

Sample Script for Pastors (Before the Sermon)

April is Autism Acceptance Month, and as the body of Christ, we believe that every person is created in the image of God and has a place in His church.

Our church is partnering with the Autism Faith Network, an organization that helps churches better support autistic individuals and their families.

Today we are (MENTION YOUR ACTIVITY) as a way to promote greater understanding, compassion, and inclusion in our church and community.

Thank you for joining us in building a church where everyone is welcomed and valued.



SAMPLE SOCIAL MEDIA POSTS & IDEAS

Please use our recommended hashtag #AutismFaithNetwork when posting on social media. You can also tag the Autism Faith Network and invite other churches to join the movement toward autism awareness, acceptance, and inclusion.

Facebook

Our church is partnering with the Autism Faith Network for Autism Acceptance Month! We're learning how to better welcome and support autistic individuals and their families. Learn more and join us: <https://autismfaithnetwork.com>
#AutismFaithNetwork #AutismAcceptance #FaithAndInclusion

We're inviting (TAG OTHER CHURCHES) to join us in promoting autism awareness, acceptance, and inclusion this April! Together we can make our places of worship more welcoming for everyone. Learn more: <https://autismfaithnetwork.com>
#AutismFaithNetwork

Join us on (DATE) at (TIME) as we recognize Autism Acceptance Month and celebrate inclusion at (CHURCH NAME)! Everyone belongs here.
#AutismFaithNetwork #AutismAcceptance

Our church is learning how to better serve autistic individuals and their families through the Autism Faith Network.

How is your church creating a more inclusive environment? Let's talk!
#AutismFaithNetwork #FaithAndInclusion

At (CHURCH NAME), we believe everyone belongs. We're proud to support autism awareness, acceptance, and inclusion in our church and community.
#AutismFaithNetwork

X (formerly Twitter)

Our church is partnering with @autismfaithnet to promote autism awareness, acceptance, and inclusion. Join us this April!
#AutismFaithNetwork #AutismAcceptance

What steps has your church taken to welcome autistic individuals and their families? Follow @autismfaithnet for tips on creating a more autism-friendly church.
#AutismFaithNetwork

We're celebrating Autism Acceptance Month with @autismfaithnet and inviting other churches to join us!

Learn more: autismfaithnetwork.com
#AutismFaithNetwork

Every church can take steps toward greater inclusion. We're learning how through @autismfaithnet.
#AutismFaithNetwork #FaithAndInclusion

SAMPLE SOCIAL MEDIA POSTS & IDEAS (continued)

Instagram

Pair your post with a photo or short video (church members, events, or your building). Be sure to get permission before posting photos of individuals.

We believe everyone belongs at (CHURCH NAME).

This April, we're partnering with the Autism Faith Network to promote autism awareness, acceptance, and inclusion.

Learn how your church can get involved with promoting autism awareness and inclusion: autismfaithnetwork.com

Tag a church that should join us in promoting autism awareness and acceptance!

#AutismFaithNetwork #AutismAcceptance
#FaithAndInclusion

Our church is taking steps to become more welcoming for autistic individuals and their families. We're proud to partner with the Autism Faith Network to help create more inclusive places of worship.

Learn more: autismfaithnetwork.com
#AutismFaithNetwork

Inclusion matters. Representation matters.
Belonging matters.

Join us and the Autism Faith Network as we promote autism acceptance in our churches and communities.

#AutismFaithNetwork #AutismAcceptance

Additional Social Media Ideas

- **Go Live** during your autism awareness event to show how your church is promoting inclusion.
- **Share or repost content** from the Autism Faith Network and other autism advocacy organizations.
- **Tag other churches** and invite them to participate in Autism Acceptance Month.
- **Share testimonies or short videos** explaining why accessibility and inclusion matter in your church.
- **Follow Autism Faith Network** on social media for posts you can share with your congregation and community.
 - Facebook: <https://facebook.com/AutismFaithNetwork>
 - Instagram: <https://instagram.com/AutismFaithNetwork>
 - X: <https://x.com/autismfaithnet>
 - YouTube: <https://youtube.com/@autismfaithnetwork>

10 STEPS TO YOUR CHURCH BECOMING MORE INCLUSIVE FOR PEOPLE WITH DISABILITIES



1 Get to Know Your Community
Build relationships with individuals and families affected by disability.

2 Ask Questions
Learn what would make attending church easier and more welcoming.

3 Meet with Leadership
Work with church leaders to discuss needs and possible solutions.

4 Educate Yourself
Learn about different disabilities and the accommodations people may need during services.

5 Organize Your Team
Invite people who are passionate about inclusion to help lead the effort.

6 Develop a Plan
Decide what type of ministry you will offer and how often it will meet.

7 Spread the Word
Share information about your ministry within the church and local community.

8 Put Your Plan in Action
Launch your ministry and maintain open communication with families and volunteers.

9 Evaluate and Improve
Gather feedback and make adjustments to your ministry as needed.

10 Pray Without Ceasing
Pray for your ministry, the families you serve, and the disability community.

THE DO'S AND DON'TS

of Making Your Place of Worship Inclusive for Autistic Children

Below are some common occurrences — **and remedies** — for the statements, thoughts, and actions that parents of autistic children often experience at places of worship.

DON'T	INSTEAD
SAY “Can you keep your child quiet?”	SAY “How can we accommodate your child in our services?”
THINK “This child is disrupting the service.”	THINK “I’d like to get to know this family, so we can include this child in our fellowship.”
SAY “This child can’t learn.”	SAY “It’s all of our responsibility to teach this child the ways of God.”
THINK “This child should not be in our congregation.”	THINK “All of us can participate in our own unique way.”
SAY “If your child can’t handle being here, then keep them home.”	SAY “How can we make the service more inclusive for your child?”
THINK “Why can’t this child just behave?”	THINK “There may be something this child is experiencing that I am unaware of.”
THINK “This behavior isn’t Christ-like.”	REMEMBER “Christ was often ridiculed for fellowshiping with people who were different.”
THINK “Why can’t this child just pay attention?”	THINK “What might help hold this child’s attention?”

HOW PARENTS CAN NURTURE THE FAITH OF THEIR AUTISTIC CHILD



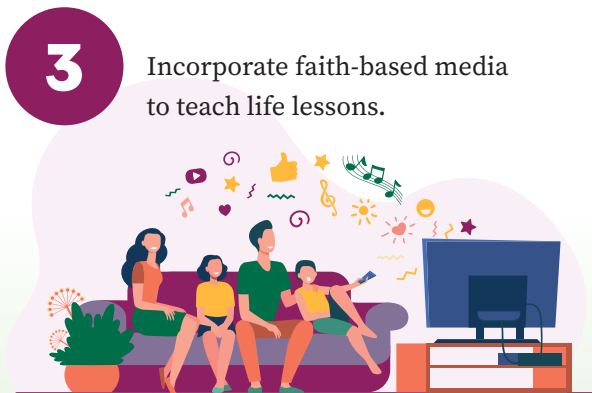
1

Worship God with interactive songs and instruments.



2

Include prayer as part of your daily routine.



3

Incorporate faith-based media to teach life lessons.



4

Act out stories from the Bible using items of interest and materials around your home.



5

Use social stories and sensory friendly books to teach Bible stories.



6

Connect with an autism-friendly place of worship.

HOW CHURCH LEADERSHIP CAN SUPPORT AUTISTIC CHILDREN AND THEIR FAMILIES



1 Be Knowledgeable

- Get educated about autism.
- Attend disability ministry conferences.

2 Be an Advocate

- Talk to your congregation about autism in a positive way.
- Speak out against harmful stigmas.

3 Be Accommodating

- Have volunteers, a sensory room, or alternative activities available.
- Be available for support if needed outside of scheduled service times.

4 Be Inclusive

- Include autistic children in church activities and special events.
- Remove barriers that may keep families from participating in services.

5 Be Welcoming

- Advertise accommodations you provide on your website and social media.
- Create an atmosphere where autistic children and their families have a sense of belonging.

6 Be Understanding

- Autism affects each person differently and triggers may vary.
- There may be aspects of service that are hard for families, even with accommodations.



DISABILITY MINISTRY GROUPS

Here are a few faith-based nonprofit organizations that are passionate about serving those with disabilities and their families. This list is not exhaustive and will be updated from time to time.

Ability Ministry | <https://abilityministry.com/>

Ability Ministry seeks to equip and empower disability ministries for churches, families and individuals affected by disabilities. They offer free consulting services for those interested in starting a disability ministry. They also offer curriculum, training videos and books that can be used specifically for a disability ministry.

Banquet Network | <https://www.thebanquetnetwork.com/>

The Banquet Network inspires, equips and resources churches to reach, serve, and include individuals and families affected by disability: joyfully, simply, and cooperatively. They provide 1 on 1 coaching, group workshops of 3-5 churches and provide small grants to churches looking to start disability related projects.

Faith Inclusion Network | <https://faithinclusionnetwork.org/>

Faith Inclusion Network (FIN) seeks to support people with disabilities in faith communities by helping them to find welcoming and accessible faith communities. FIN provides trainings, consultations and network opportunities for faith communities seeking to better include those with disabilities in their congregations.

Joni and Friends | <https://joniandfriends.org/church/>

Joni and Friends provides a multitude of church training resources that can help churches welcome and embrace people with disabilities. Their website provides videos, handouts, podcasts, and even online courses. Ministry Mentors are also available to answer questions that you may have.

Key Ministry | <https://www.keyministry.org/>

Key Ministry promotes meaningful connection between churches and families of kids with disabilities for the purpose of making disciples of Jesus Christ. They also serve churches seeking to become more intentional in ministry with those impacted by mental illness and trauma. Key Ministry hosts an annual conference and also provides consultations for churches.

DISABILITY MINISTRY GROUPS (continued)

Mother to Mother | <https://mother2mother.info/>

Mother 2 Mother was created to strengthen mothers and caregivers, assisting them to be the best advocates for their loved ones. The organization offers monthly support meetings, trainings for parents and families, and disability awareness training to churches to increase church growth and cohesion.

Nathaniel's Hope | <https://nathanielshope.org/>

Nathaniel's Hope educates and equips communities and churches to provide FREE respite care and programs to enrich the lives of those with disabilities and their families. This is done through their Buddy Break program, which is a FREE Parent's Day Out/Respite program. They also provide several other programs that uplift and support special needs families.

Rising Above Ministries | <https://www.risingaboveministries.org/>

Rising Above Ministries seeks to bring the love of God and hope in Christ to special needs families through support, encouragement, inspiration and community. The ministry offers several retreats throughout the year, such as customized events for special needs dads, moms and female caregivers.

SOAR Special Needs | <https://soarspecialneeds.org/>

SOAR Special Needs empowers families with special needs to SOAR in their local and faith communities. Services offered include respite night events, summer day camps, ministry consultations and mentorship programs.

Together We Care | <https://www.togetherwecarega.org/>

Together We Care exists to partner with parents, individuals with disabilities and organizations to ensure that there are opportunities for inclusion and independence in all aspects of their community. Several consultation packages are available to meet the need of private schools, businesses and faith communities. Together We Care also hosts an annual disability ministry training conference.

Walk Right In | <https://walkrightin.org/>

Walk Right In offers online counseling for individuals, marriages, and families, as well as faith-based caregiver support groups. They desire to help caregivers in special needs families walk abundantly in life, faith and relationships.



P.O. Box 73122, Newnan, Georgia 30271
(404) 500-8229

info@autismfaithnetwork.com
autismfaithnetwork.com